

Magnetic Susceptibility Sonde

This is a two coil electromagnetic sonde designed to measure a wide range of apparent formation magnetic susceptibility.

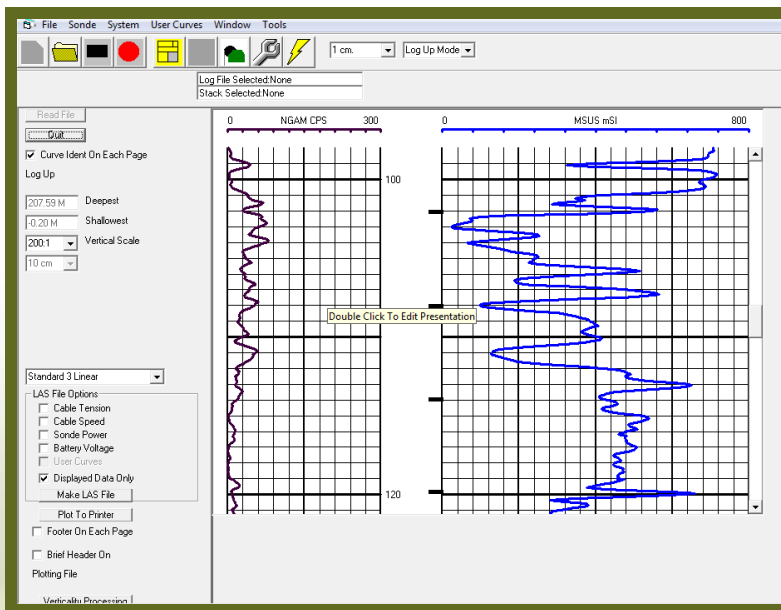
Instrument Specifications



Length:	1.37 m
Diameter:	45 mm
Weight:	4.5 kg
Frequency:	2 kHz Max.
Pressure:	20M Pa
Temperature:	75°C
Range Options:	10-5 to 2 SI units @ 30 cm spacing .

Instrumentation used is produced by Geovista and operates with a digital data output.

This is a bottom end Sonde however it can be ran in conjunction with up to 4 other modular units. (ie Ngam, Resistivity, water level.. etc..)



Calibration

Calibration values are supplied for the Magnetic Susceptibility.

Our standard values equivalent susceptibilities are 0×10^{-3} {free Air) and 5×10^{-3} SI unit.